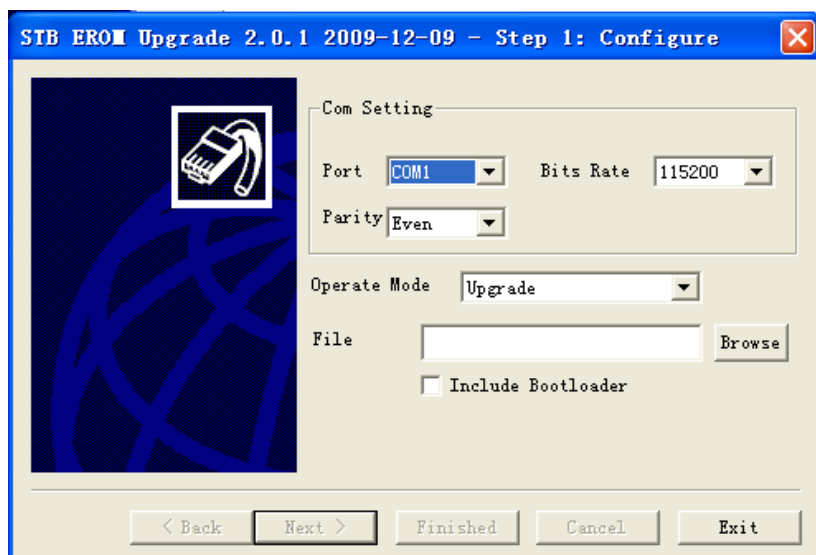


# ALI S3281 PC Erom Upgrade Tool User Manual

--V1.00

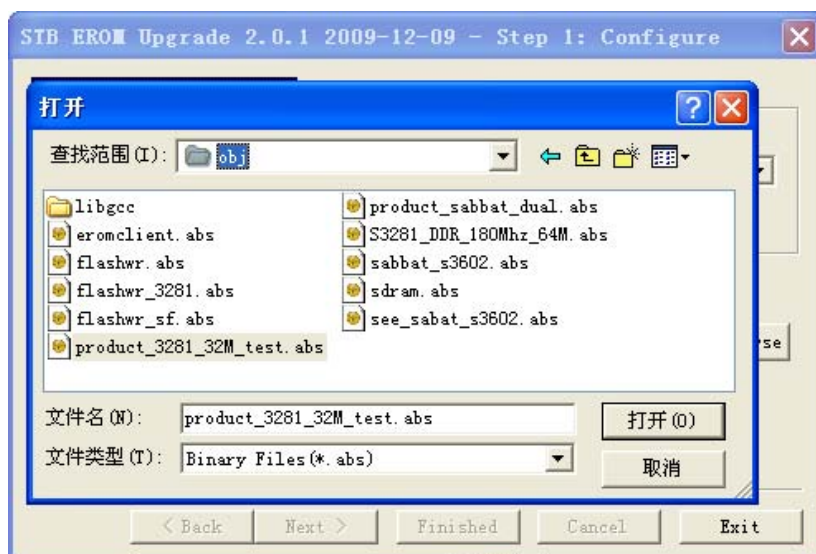
Firstly, You should make sure that the PC's COM Port had been connected to S3281 STB's RS232 port by a TX/RX crossed cable.

- 1) Double Click "EromUpgrade.exe" to run Erom Upgrade tool under Windows OS, and then you'll see bellow window prompts.

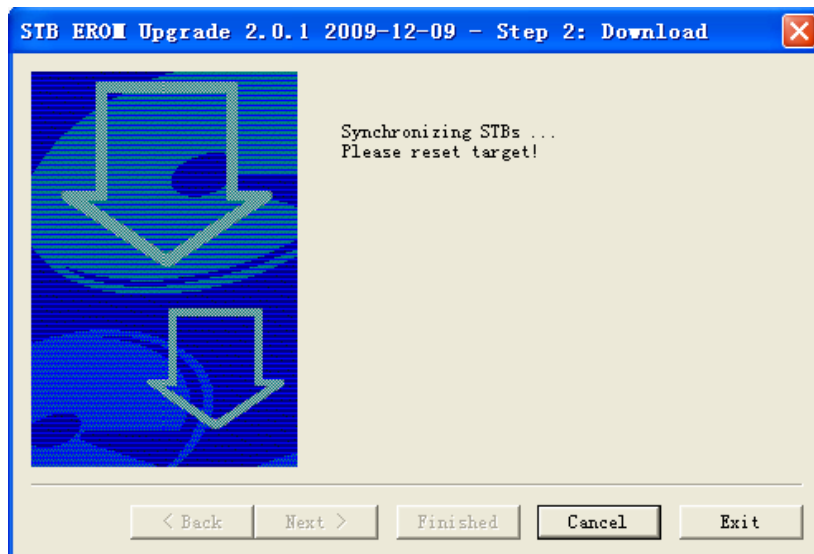


- 2) Then select "port" to the same PC COM port as which your PC connects to STB; select "Bits Rate" to "115200"; select "Parity" to "Even".
- 3) Operate Mode defaults in "Upgrade", it means you want to upgrade FW. If you select "Data Dump", it means you want to Dump the FW to your PC HD from STB's flash.
- 4) Click button "Browse" up right of the window, it will prompt a file browser and you can select a FW binary file which you want to upgrade now.

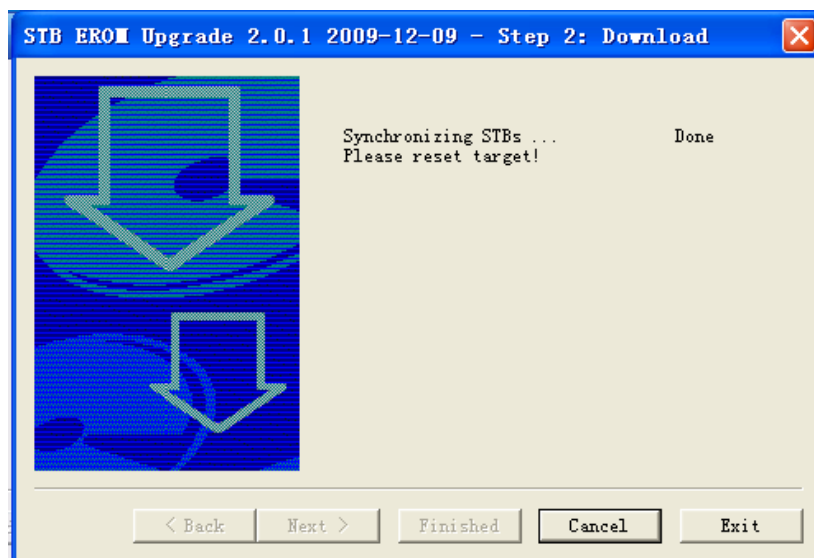
If you want to upgrade all the FW include Bootloader, you should select the flag "Include Bootloader", if you just upgrade the FW without bootloader, you should not select it.



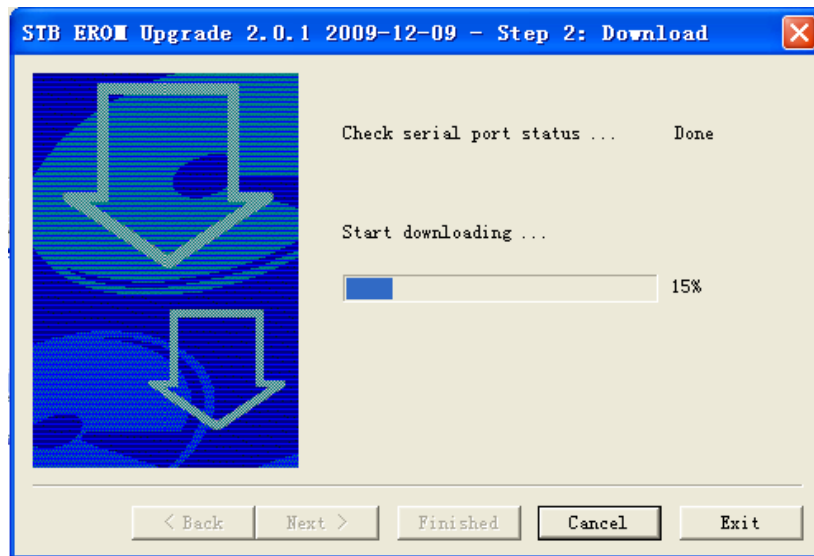
- 5) After selected FW file and upgrade mode and COM port, then you should click Next, bellow window will be appears and it means it's waiting the target STB power on.



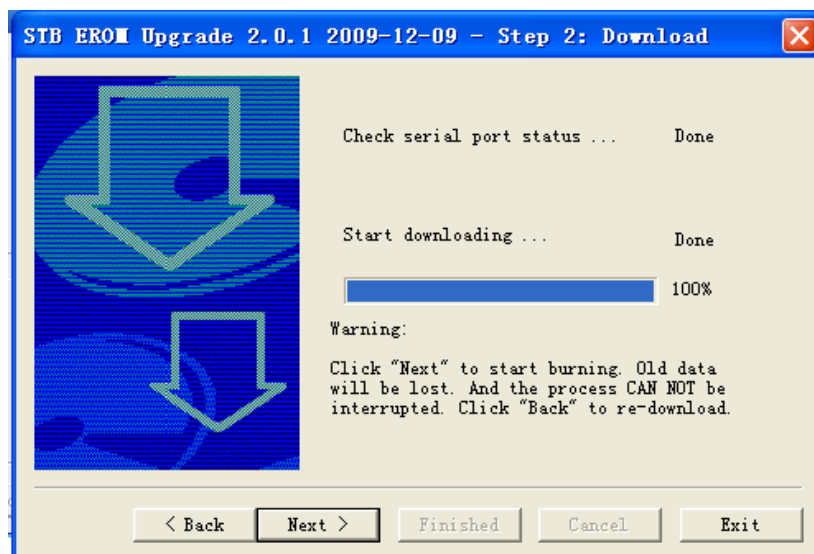
- 6) Power on the STB, and you will see "Synchronizing STBs... Done", it means PC and STB had been connected successfully.



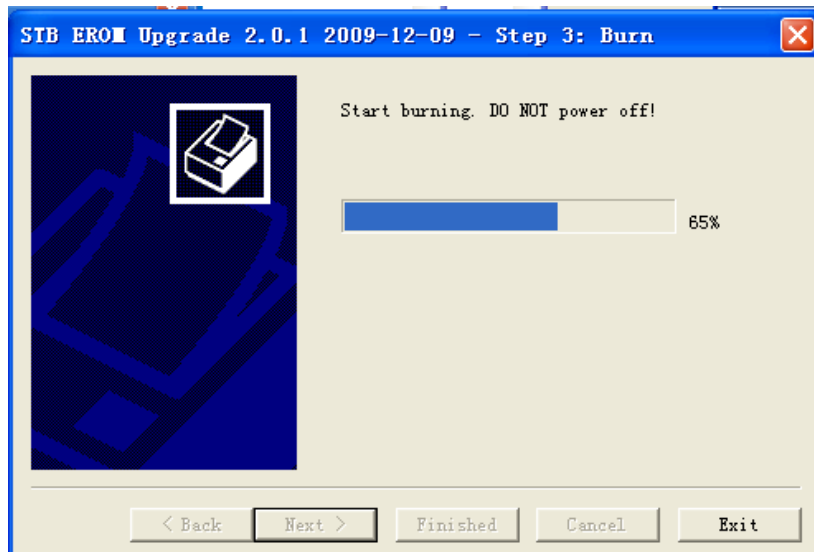
- 7) Just a moment later, it will start download data to STB's Memory and show progress bar like bellow picture.



- 8) When data downloading is completed, please click "Next". If you change your mind and want to upgrade another FW, you can click "Back" to select file again or you can close this window to cancel this upgrading.



- 9) Then you will see Burning progress bar is going like bellow picture, it means it's burning the data that had downloaded to STB's memory to STB's Flash, please don't power off the STB at that time, otherwise, FW in flash will be damage and maybe can't boot up.



- 10) When Burning is finished, you can click next to go back to initial menu and upgrade another STB or you can click "Finished" to close upgrade tool window. Then STB should boot up automatically. Now, you can pick away this STB and enjoy DTV world.

